



Serban Arabia Corporation

Profile and Services

Company's profile

Serban Arabia functions actively on the market since 2010. The main area of the company's activity is providing comprehensive Civil, telecommunication and IT solutions first of all in office blocks and commercial buildings. We base our services on modern technologies and systems of the leading manufacturers. We don't limit ourselves to provide the service, but we also support our Clients from the beginning and through the whole activity time – we help to solve problems and explain telecommunication and IT questions which are often new to the Clients.

We also offer construction and technical support by construction of telecommunication infrastructure in a building. Our maintenance team is a great asset as they are able to identify a problem and repair a defect. We answer to our Clients' new needs on a current basis when we quickly take actions.

CONTENTS

Telecom Projects

- Installation of ODU/Shelter
- Installation of 2G, 3G, and LTE RF Modules, Power Safe Batteries, Rectifier Power Specification, and Cable Connection
- Jumper Cable and ODU/Shelter Feeder Routing
- Outdoor Grounding Busbar Specification
- Grounding/Earthing for Green Field Sites
- Cable Connections, Cable Tray, Cable Ladder, Aircraft Warning Light
- MCB for ODU/Shelter and SCECO Wall Construction
- Outdoor Installation of MW, 900MHz, 1800MHz, and 2100MHz Antenna

IBS (In-Building Solutions)

- Cable Layout
- Test Using Site Master
- IBS Personnel Equipment and Safety

Civil Works

- Excavation/Drilling
- Lane Mix Concrete
- Base Stage
- Column Stage
- Isolation Stage
- Backfill
- Painting Tower and Erection
- ODU/Shelter Construction
- Ladder
- Security Link Fence
- Rooftop Beam Layout
- Rooftop Beam Connection Details

Fiber Optics Cable Installation

- Cable Route Mapping
- Cable Routing
- Pouring of Cement Over Cable Route

TETRA Projects (Misco)

- Module Installation
- Cable Routing
- Cable Label
- Tower View

Small Cell Tower (Huawei)

- Tower Installation
- Cable Routing and Labeling
- Tower View

Delivery of Services

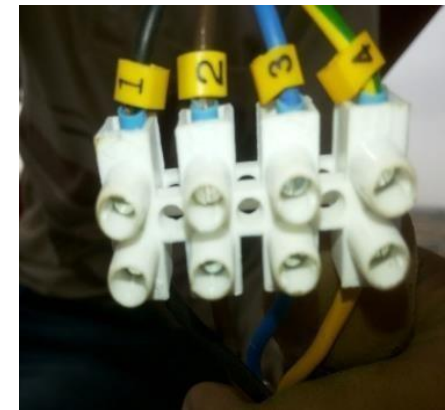
Installation of ODU/Shelter

- ODU/Shelter properly installed
- No nuts and bolts missing
- Installation of Roxtec properly fixed with silicon



Installation of 2G, 3G, LTE RF Modules, Power Safe Batteries, Rectifier Power Specification, and Cable Connection

- 2G – 900 MHz Configuration
- 3G – 2100 MHz Configuration
- 4G – 1800 MHz Configuration
- Cabinet installed properly according to layout
- Power and jumper cables labeled
- No nuts and bolts missing
- FB1 and FB2 labeled and installed by sequence of 12V to 48V
- Fuse Cable 2G – 63Amp
- Fuse Cable 3G – 63Amp
- Fuse Cable 4G – 63Amp



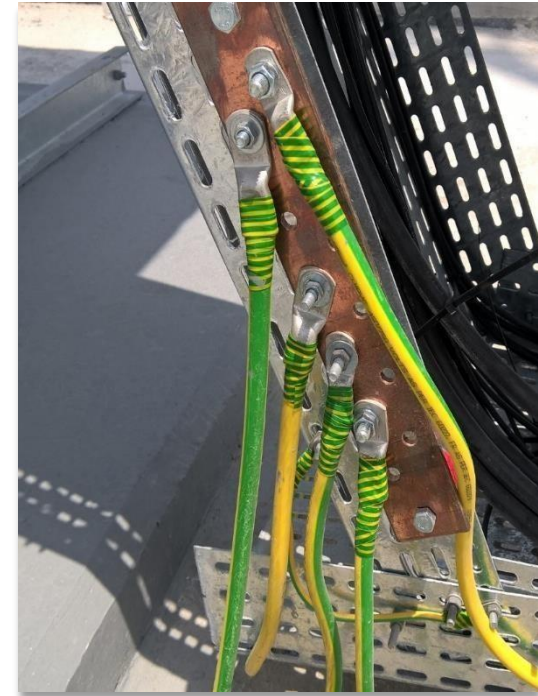
Jumper Cable and ODU/Shelter Feeder Routing

- Routing of jumper cables from outdoor unit, through cable gantry, through tower erection
- All installations according to standard quality parameters



Outdoor Grounding Busbar Specification

- Grounding cable connected to busbar with suitable cable legs
- Outdoor feeder grounding

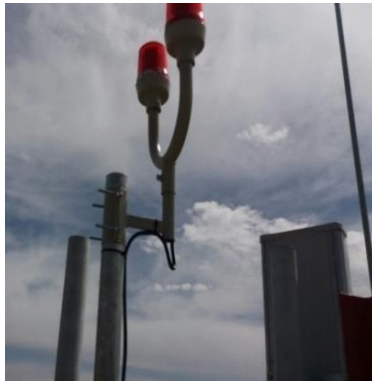
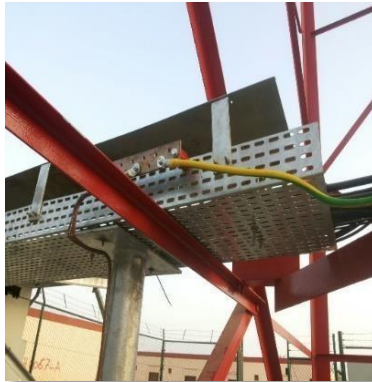


Grounding/Earthing for Green Field Sites



Cable Connections, Cable Tray, Cable Ladder, and Aircraft Warning Light

- Aircraft warning lights properly installed and secured in tower
- No loose screws and no rupture to power cable



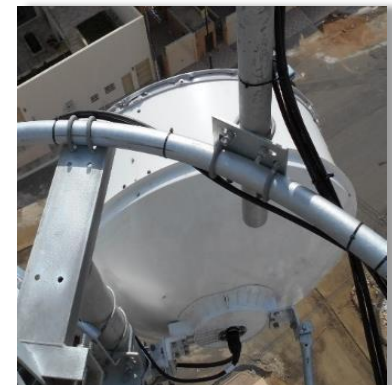
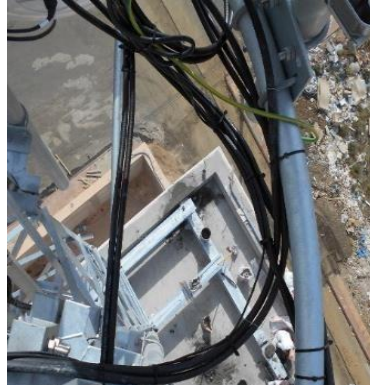
MCB ODU/Shelter and SCECO Wall Construction

- Units installed according to standards
- No nuts and bolts missing
- Weatherproof cover



Outdoor Installation of MW, 900MHz, 1800MHz and 2100MHz Antenna

- Sectors A, B, and C
- Antenna View, Grounding, and MW Installation



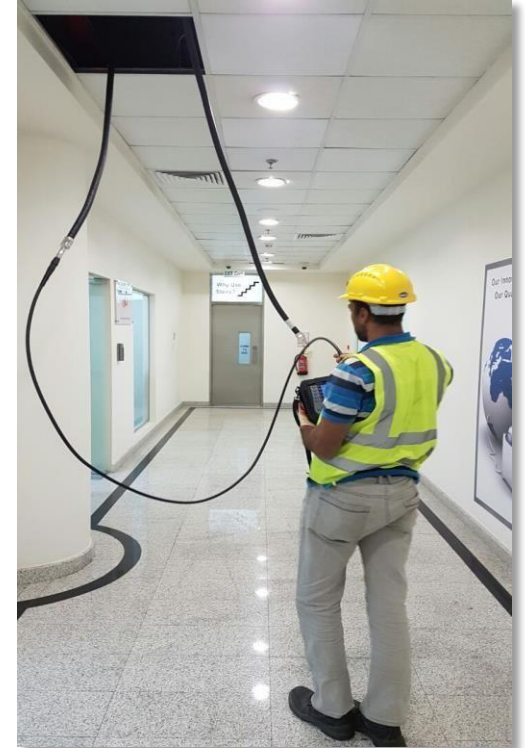
IBS (IN-BUILDING SOLUTIONS)

Cable Layout

- Layout of cable is pre-planned to avoid clutter in workplace
- Tools and equipment are stored in one place to avoid slip/trip



Test Using Site Master



IBS Personnel Equipment and Safety

- IBS Personnel perform installation tasks using the standard required safety equipment
- Safety equipment are worn properly by IBS Personnel to for company and global safety regulations compliance



CIVIL WORKS

Site Excavation/Drilling

- Site Excavation/Drilling can commence only after Civil Engineer has performed the survey, mapping and design.



Lane Mix Concrete



Base Stage



Column Stage



Isolation Stage



Backfill



Painting Tower and Erection



Ladder



ODU/Shelter Construction and Installation

- ODU/Shelter properly installed
- No nuts and bolts missing



Security Chain Link Fence



Rooftop Beam Layout



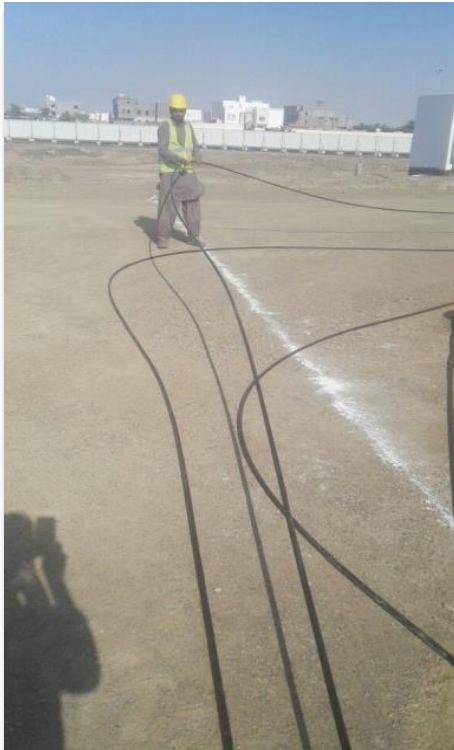
Rooftop Beam Connection Details

- All connection details installed according to approved civil drawing
- No nuts and bolts missing



FIBER OPTICS CABLE INSTALLATION

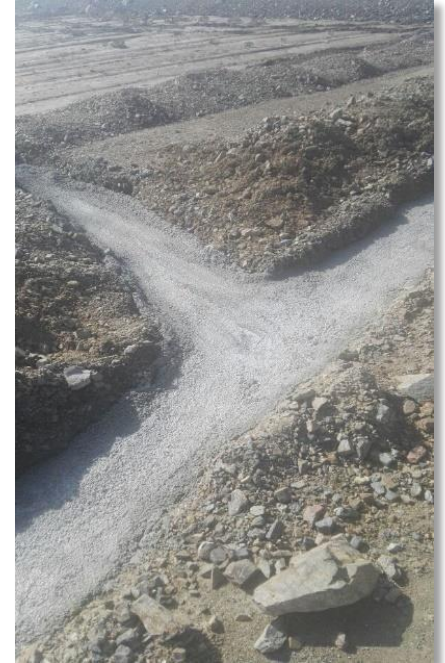
Cable Route Mapping and Excavation



Cable Routing



Pouring of Cement Over Cable Route



Preparation for Concrete Pavement Site



Installation of Cable Cabinet



Cable Routing for Cement Pavement Site



Pouring of Cement Over Cable Route



Integration of Cable Cabinet in Routing and Cement Pouring



Asphalt Spreading and Compacting over Cable Route



TETRA PROJECTS (MISCO)

Module Installation



Cable Route



Grounding



TowerView



SMALL CELL

Tower Installation, Cable Routing, and Labeling



Tower Antenna View



REFERENCES

- Nokia 2G-3G-4G Zain Reload Project 370 site ABHA Region
- Nokia Civil Works Towers Installation 85 site
- Nokia Small Cell 17 site (has just started)
- Nokia Carrier Agregation Zain Reload Project 160 site

- STC Fiber Jeddah OSP FTTX Project 550 villas
- ITEA FIBER FTTX Project TEBOOK AREA

- AL HABIB HOSBITAL IBS PROJECT RIYADH HUAWEI MSI
- BLUE TOWER AL KOBAR IBS PROJECT HUAWEI MSI
- NATIONAL GUARD IBS PROJECT HUAWEI MSI
- NOKIA MUZDALIFAH IBS PROJECT MAKKAH

- SMALL CELL PROJECT HUAWEI MSI
- SMALL CELL PROJECT NOKIA
- NOKIA IBS

REFERENCES

- Nokia 2G-3G-4G Zain Reload Project 370 site ABHA Region
- Nokia Civil Works Towers Installation 85 site
- Nokia Small Cell 17 site (has just started)
- Nokia Carrier Aggregation Zain Reload Project 160 site

- STC Fiber Jeddah OSP FTTX Project 550 villas Ongoing
- ITEA FIBER FTTX Project TEBOOK AREA

- AL HABIB HOSBITAL IBS PROJECT RIYADH HUAWEI MSI ONGOING
- BLUE TOWER AL KOBAR IBS PROJECT HUAWEI MSI
- NATIONAL GUARD IBS PROJECT HUAWEI MSI ONGOING
- NOKIA MUZDALIFAH IBS PROJECT MAKKAH

- SMALL CELL PROJECT HUAWEI MSI
- SMALL CELL PROJECT NOKIA
- NOKIA IBS

- TETRA PROJECT MISCO 19 SITE ONGOING
- TETRA ASELSAN PROJECT Maintenance ASIR Region

Safety Report for

Delivery Services

CONTENTS

Telecom Projects

- Outdoor unit
- Rooftop Site MDB for ODU
- Installation of 2G, 3G, and LTE RF Modules
- Power Safe Batteries Installed According to Standards
- Jumper Cable Routing
- Cable Gantry and Tower Erection
- Telecom Personnel Equipment and Safety
- Antenna and MW Installation
- Grounding
- Outdoor Power Cable Connection
- Rooftop Site MDB for SCECO

IBS (In-Building Solutions)

- Cable Layout
- Test Using Site Master
- IBS Personnel Equipment and Safety

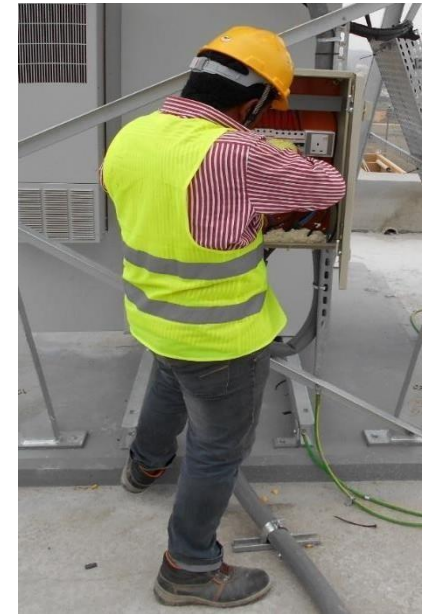
Civil Works

- Lane Mix Concrete
- Base Stage
- Column Stage
- Painting Tower and Erection
- Tower Pedestal and Steel Beam Building Connection
- Civil Works Personnel Safety and Equipment

TELECOM PROJECTS

Installation of 2G, 3G, and LTE RF Modules

- MDB installed by Telecom personnel
- Telecom personnel uses proper personal protective equipment (PPE) and proper installation procedures to ensure safety



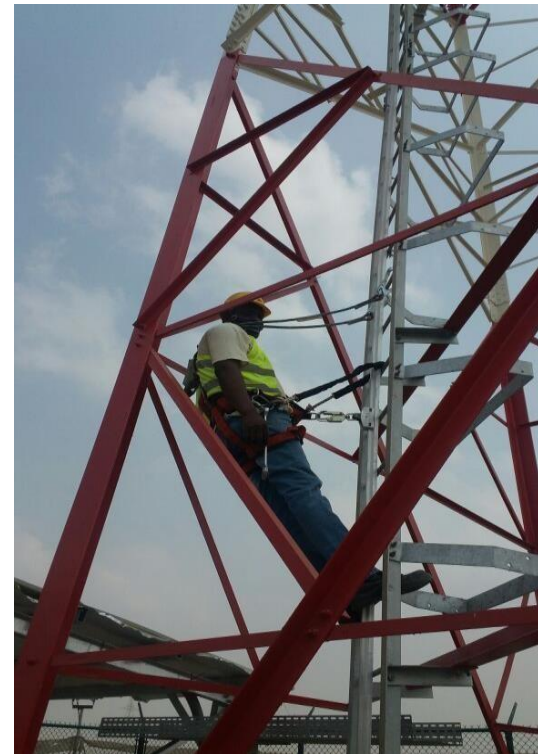
Power Safe Batteries Installed According to Standards

- Power Safe batteries installed by Telecom personnel
- Telecom personnel uses proper personal protective equipment (PPE) and proper installation procedures to ensure safety
- FB1 and FB2 labeled, installed by sequence of 12V to 48V



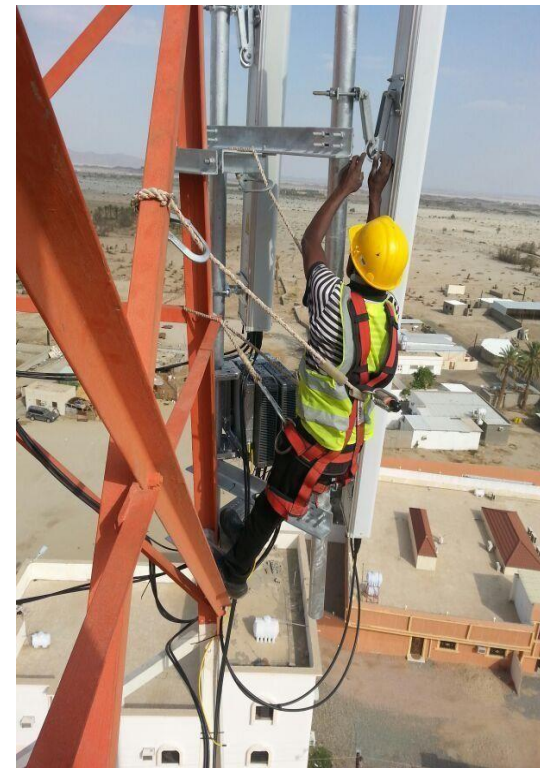
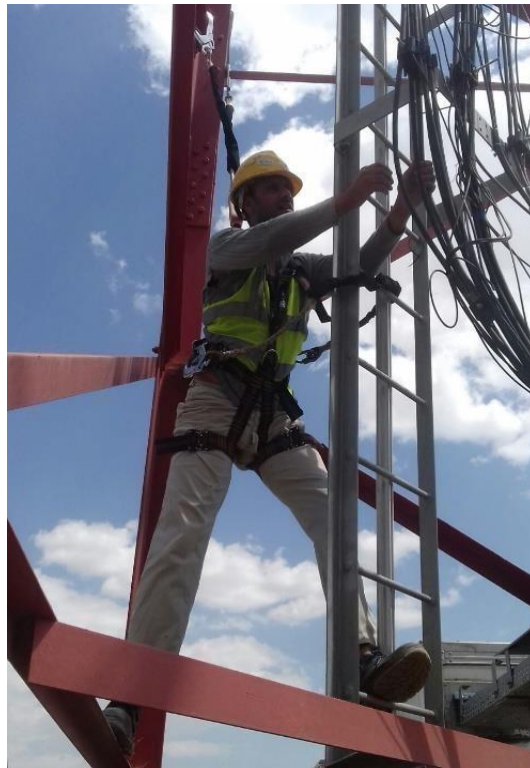
Telecom Personnel Equipment and Safety

- Telecom personnel with standard Personal Protective Equipment (PPE)



Telecom Personnel Equipment and Safety

- Telecom personnel make proper use of PPE and safety procedures while working





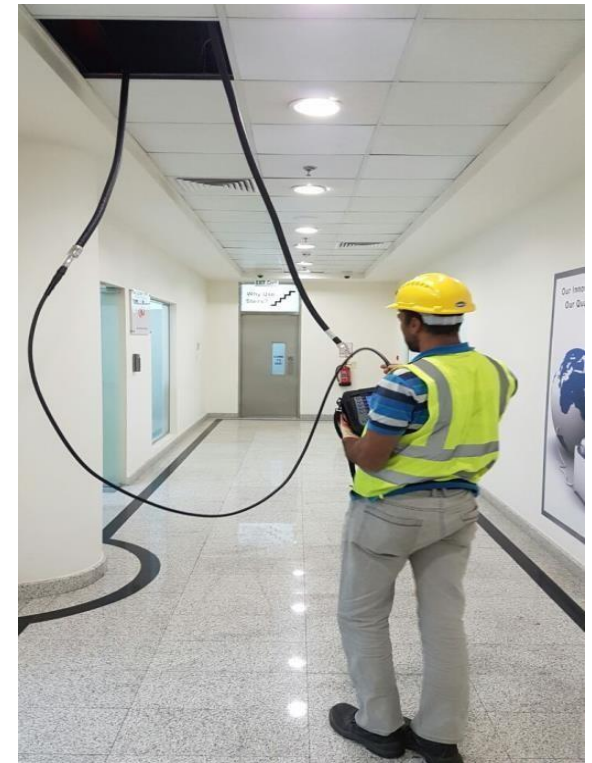
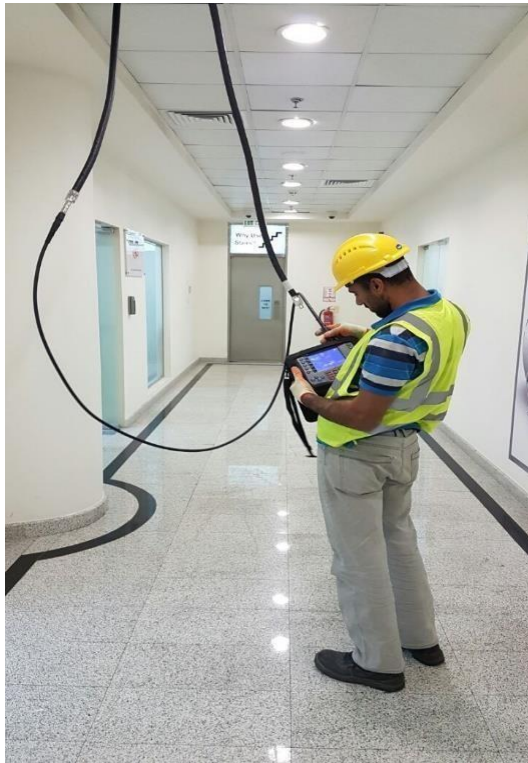
IBS Project Safety

Jumper Cable Routing

- Layout of cable is pre-planned to avoid clutter in workplace
- Tools and equipment are stored in one place to avoid slip/trip



Test Using Site Master



IBS Personnel Equipment and Safety



CIVIL WORKS SAFETY

Lane Mix Concrete



Base Stage

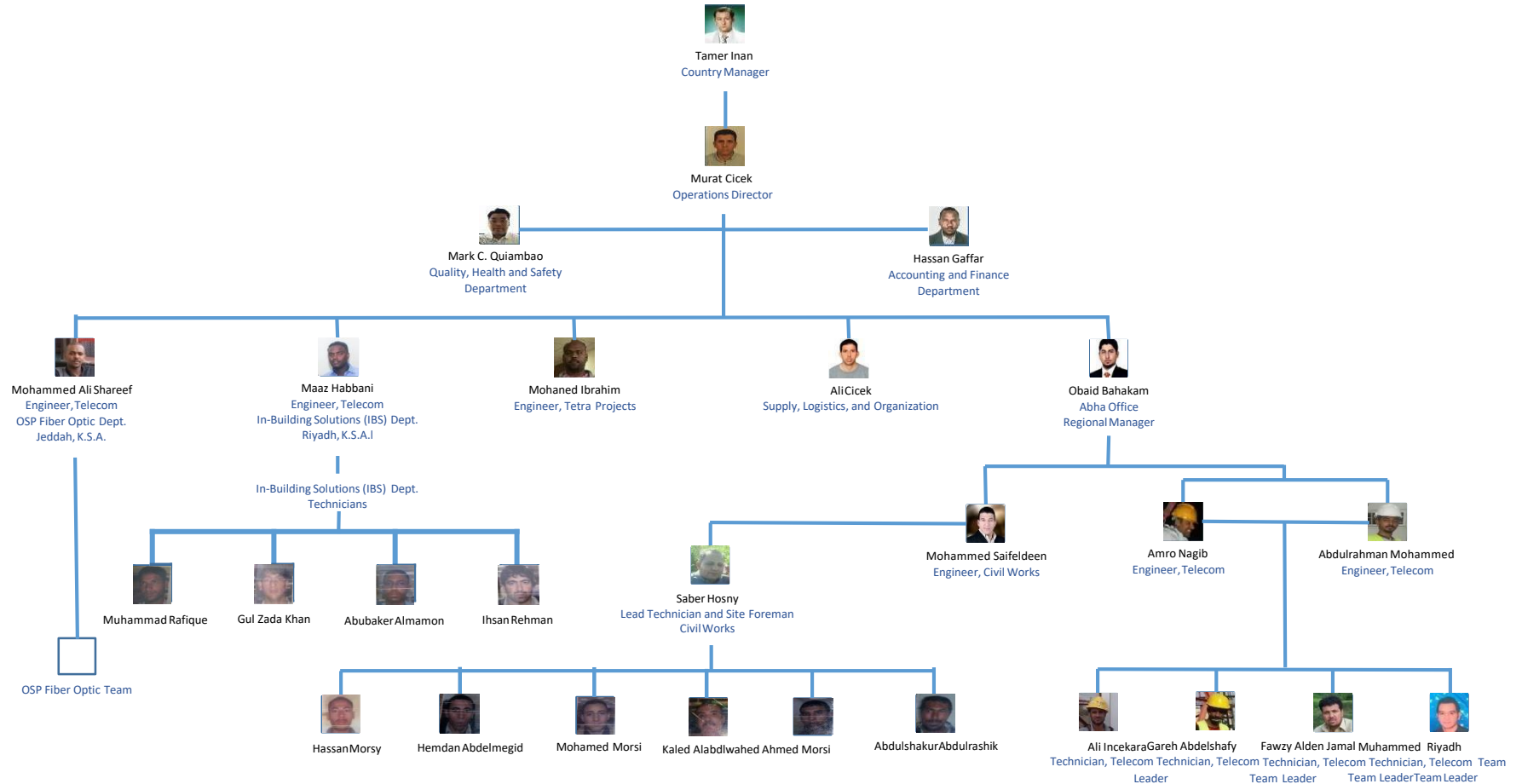


Tower Painting and Erection



SERBAN Al-Arab LLC ORGANIZATIONAL STRUCTURE

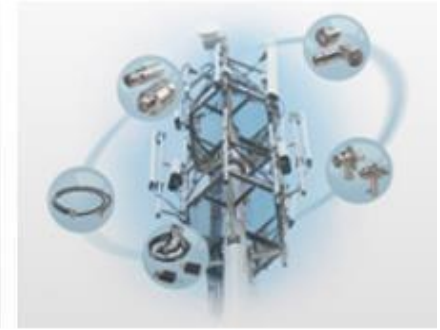
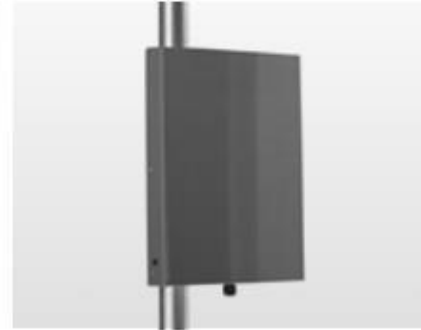
Serban Al-Arab LLC Riyadh, K.S.A. ORGANIZATIONAL CHART



SERBAN DISTRIBUTION PRODUCT



Antenna
Solutions



RF Products



Coaxial
Cables



Fiber Optic
Solutions



SERBAN DISTRIBUTION PRODUCT

- Serban Arabia telecom is distributor of Amphenol Telecom products And Auxiliary Products like Antennas, connectors, RF cables, Fiber Optic Cables, IBS and TETRA Small Antennas, Splitters, Arrestors etc.





- Serban Arabia provides H&S Products



Certification from Chamber of Commerce

الرقم: ١٠١٠٥٤٢٢٢٦ التاريخ: ١٤٣٧/٠١/٠٦		شهادة تسجيل فرع مؤسسة		وزارة التجارة والاستثمار Ministry of Commerce and Investment		
اسم التاجر: عماد بن عوضه بن غرامه الزهراني		الجنسية: سعودي		تاريخ الميلاد: ١٤٠٦		تاريخه: ١٤٢٣/٠٣/٢٠
رقم السجل المدني / بطاقة الأحوال: ٠٠١٠٣٣٨١٣٥٨٣		المركز الرئيسي: جدة للفصلية صاري ١٩٢١٦		ص.ب: ٤٤٤٠		الرمز البريدي: ٢٣٤٤٧
رقم سجل المركز الرئيسي: ٤٠٣٠٢٧٢٤٨٠		الاسم التجاري للفرع: مؤسسة سريان العرب للمقاولات		العنوان: الرياض العليا العليا		ص.ب: ٤٤٤٠
الرمز البريدي: ٢٣٤٤٧		هاتف: ١٢٠٧٥٩٩		فاكس:		تاريخ الميلاد: ١٤٠٦
النشاط: تركيب معدات الاتصالات و تمديد الاتابيب باختلاف انواعها للكهرباء والاتصالات وغيرها و إنشاء واقامة واصلاح محطات الطاقة الكهربائية والمحولات .		رأس المال: ٥٠٠٠٠		اسم المدير أو الوكيل المفوض: عماد بن عوضه بن غرامه الزهراني		تاريخ الميلاد: ١٤٠٦
الجنسية: سعودي		رقم السجل المدني - الإقامة: ٠٠١٠٣٣٨١٣٥٨٣		تاريخه: ١٤٢٣/٠٣/٢٠		مصدره:
سلطات المدير		يشهد مكتب السجل التجاري بمدينة الرياض		بأنه تم تسجيل هذه المؤسسة بسجل مدينة الرياض		تاريخه: ١٤٢٣/٠٣/٢٠
وتنتهي صلاحية الشهادة في ١٤٣٨/١٠/١٩		بموجب الإيصال رقم: ١٦٤٦١٢١٥		و تاريخ: ١٤٣٧/٠١/٠٦		مدير السجل التجاري: نيف صالح الطلسان
الختم				التوقيع:		التاريخ:
يمكنك التحقق من صحة هذه الشهادة بالدخول على http://v.mci.gov.sa						



THANK YOU!



Serban Arab LLC.

Saudi Arabia Office

Office No.: 455, 5th Floor, Building 4, Al Musa Center, Uleya Road, Riyadh, KSA

Phone : +966 54 044 5658

Office : +966 11 416 1105

Fax : +966 11 416 1105